

**Basics**

"Based in Boise, Idaho, Boise Cascade manufactures a variety of wood products, including plywood, lumber, particleboard, paper, newsprint, and pulp. The company, which employs 10,000 people, also operates a fleet of trucks, vans, and trailers used to distribute its products and equipment around the country.

While BC's trucking division was successful, a competing trucking firm had surpassed it in one area: Web-based reporting. As a result, company management decided it needed a Web-based reporting system that was at least as good, if not better than its competitor's."

**Challenge**

"The word came down from Boise Cascade's management in May like a ton of pulp: **Develop a sophisticated Web-based reporting system that interfaces with multiple host systems, and do it in three weeks.** For the folks on BC's application development team, that deadline seemed next to impossible to meet." **And they were short a developer.**

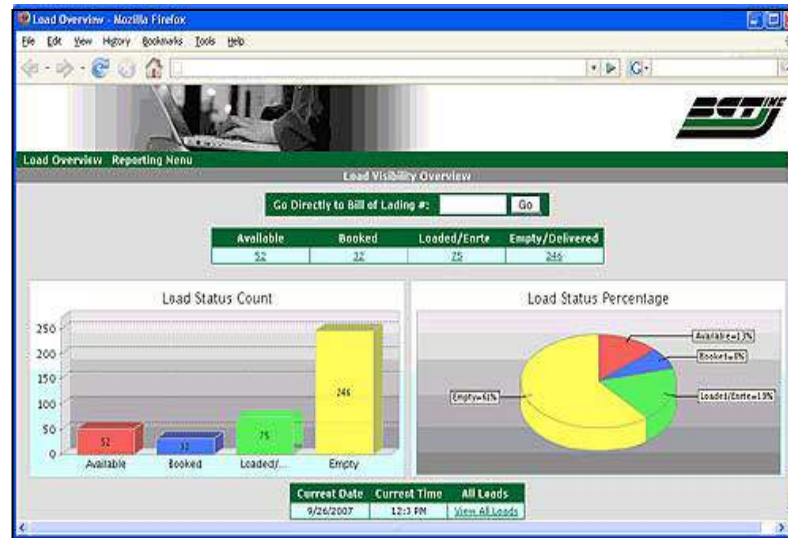
**Solution**

"After a week of training, an mrc developer arrived at BC's Boise headquarters to help Brewer and Skinner with developing the actual reporting applications. After a full week of development work, the first Web-based reporting applications had been hammered out, and m-Power was serving up Java servlet-powered HTML pages that gave BC's users the real-time access to the load data they needed."

**Value**

Brewer and company met the three-week deadline, gaining applause from people in management. "They are very, very pleased. I've received numerous positive feedback from every manager involved, saying that it's just outstanding," Brewer says.

**Two disparate databases, one Web reporting System pulling live data from both, on the fly.**



This application tracks the loads on Boise Cascade's fleet of trucks, and does so by joining the data from SQL and DB2 systems in real-time.

It then presents the results either graphically on a Web page, or textually in an Excel spreadsheet.

In either case, users can drill down into the reports to get details on specific loads.

**Load Visibility Overview Application**

Boise Cascade's new application runs on a Windows box equipped with the open-source Tomcat Java application server (which mrc recommends running instead of WebSphere). The application generates highly optimized SQL statements that are executed on the AS/400-based dispatching application located in Boise. Those SQL statements are also executed against a Windows-based SQL Server database handling pulp deliveries based in BC's DeRidder, Louisiana, pulp mill. All told, these two systems track between 500 and 600 trucks delivering a variety of products across the continent every day.

Stan Brewer was struck with the ease-of-use of the m-Power tool. "It's extremely intuitive," he says. "I did not have to learn Java to get this deployed. I'm an old RPG programmer, and all it requires is knowledge of your database. That was the big thing for me."

Brewer was also impressed with how easily it handled the SQL Server database. "The date formats on the SQL Server are totally different than anything we have on the AS/400. I didn't have to create any conversion programs for all these various dates. With m-Power came all these conversion tools. I just loved that," he says.

For the full story, visit [IT Jungle.com](http://IT Jungle.com). You can find a link at: [www.mrc-productivity.com/customers/boisecascade.html](http://www.mrc-productivity.com/customers/boisecascade.html)



**mrc (michaels, ross & cole, ltd)**  
 555 Waters Edge, Suite 120  
 Lombard, IL 60148  
 630.916.0662  
[mrc@mrc-productivity.com](mailto:mrc@mrc-productivity.com)  
[www.mrc-productivity.com](http://www.mrc-productivity.com)